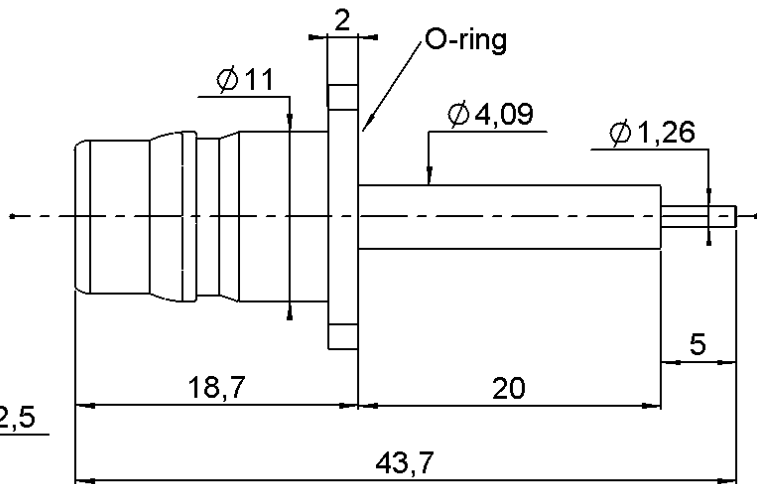
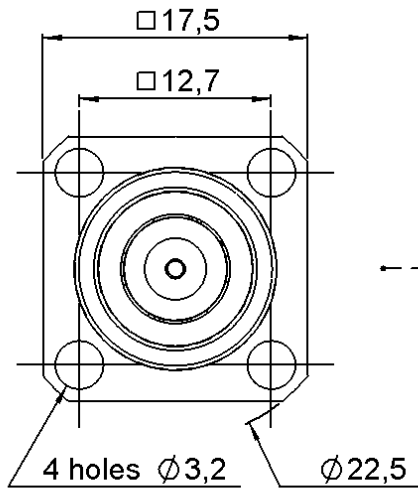


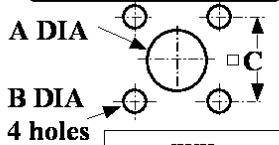
**17.5 SQUARE FLANGE RECEPTACLE
WITH CYLINDRICAL CONTACT PANEL SEAL**

R164.418.300

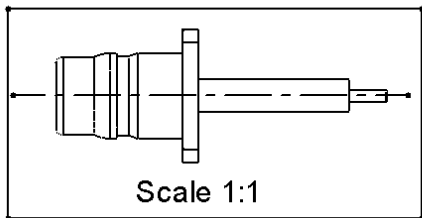
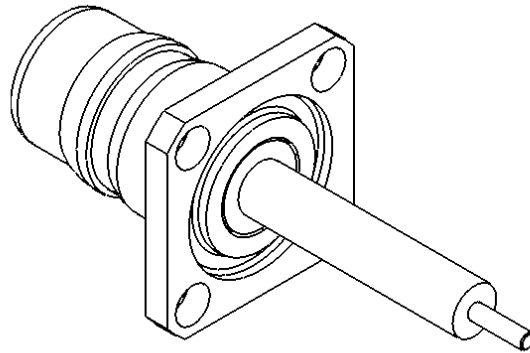
Series : QN



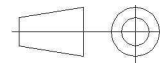
PANEL CUT OUT



	mm	
	Maxi	mini
A	7.85	7.95
B	3.4	3.3
C	12.75	12.65



All dimensions are in mm.



COMPONENTS	MATERIALS	PLATING (µm)
BODY	BRASS	BBR 0.5 OVER SILVER 3
CENTER CONTACT	BERYLLIUM COPPER	GOLD 1.3 OVER COPPER 2.5
OUTER CONTACT	-	-
INSULATOR	PTFE	-
GASKET	SILICONE RUBBER	-
OTHERS PARTS	-	-
-	-	-
-	-	-

Issue : 0833 A

In the effort to improve our products, we reserve the right to make changes judged to be necessary.



**17.5 SQUARE FLANGE RECEPTACLE
WITH CYLINDRICAL CONTACT PANEL SEAL**

R164.418.300

Series : QN

PACKAGING

Standard	Unit	Other
50	'W' option	Contact us

SPECIFICATION

ELECTRICAL CHARACTERISTICS

Impedance	50	Ω
Frequency	0-6*	GHz
VSWR	1.05 + 0,0250	x F(GHz) Maxi
Insertion loss	0.048	\sqrt{F} (GHz) dB Maxi
RF leakage	- (**90)	- F(GHz)) dB Maxi
Voltage rating	1000	Veff Maxi
Dielectric withstanding voltage	2000	Veff mini
Insulation resistance	5000	M Ω mini

ENVIRONMENTAL

Operating temperature	-55/+125	$^{\circ}$ C
Hermetic seal	NA	Atm.cm3/s
Panel leakage	IP67	

OTHER CHARACTERISTICS

Assembly instruction

Others :

- * Usable 0-11 GHz
- **RF Leakage: -80 dBm min 3<F<6
- ***PIM3: -112 dBm(2 X 20W at 1.8GHz)

MECHANICAL CHARACTERISTICS

Center contact retention		
Axial force – Mating end	18	N mini
Axial force – Opposite end	18	N mini
Torque	2.8	N.cm mini
Recommended torque		
Mating	NA	N.cm
Panel nut	NA	N.cm
Mating life	100	Cycles mini
Weight	12,4990	g

Issue : 0833 A

In the effort to improve our products, we reserve the right to make changes judged to be necessary.

